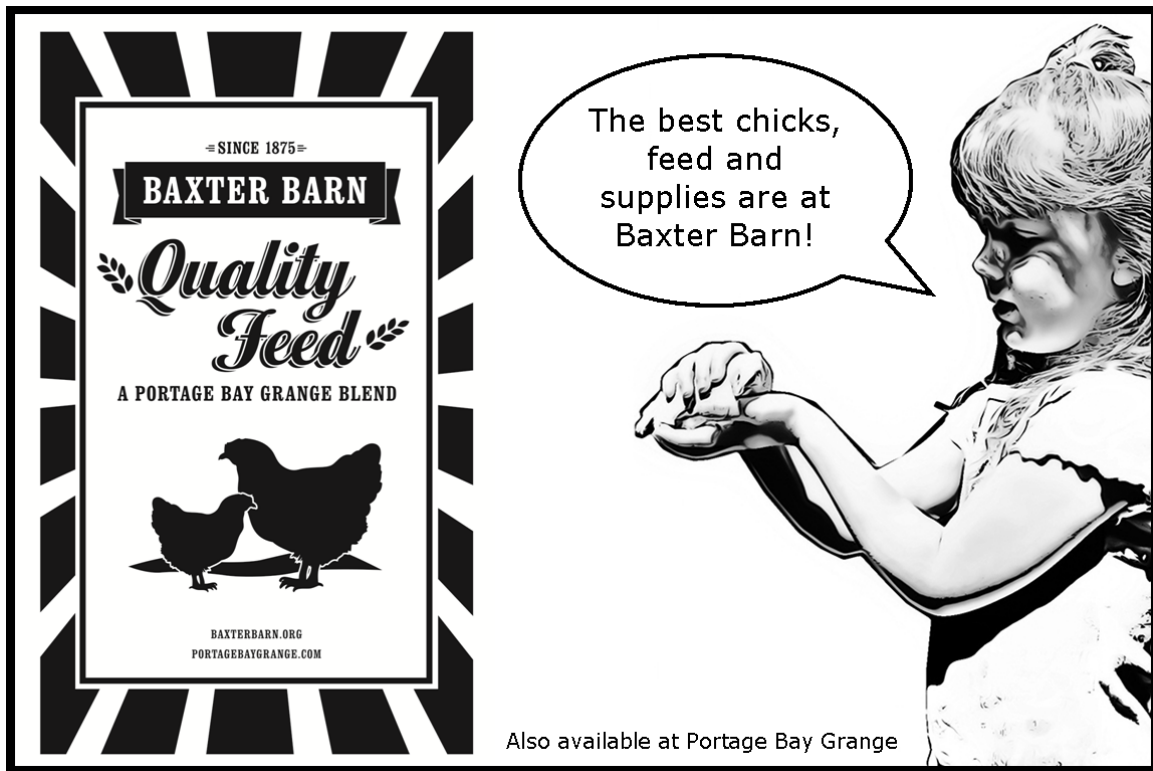


My Chicken Book

The Fertile eggs are **Chocolate Easter Eggers**.
They will lay a Blue-Green to a Chocolate egg. More of a dark Olive color.



The advertisement is enclosed in a black border with a striped pattern. On the left is a sign for Baxter Barn. The sign has a banner at the top that says "BAXTER BARN" with "SINCE 1875" above it. Below the banner, the words "Quality Feed" are written in a large, cursive font, flanked by two small leaf icons. Underneath, it says "A PORTAGE BAY GRANGE BLEND". At the bottom of the sign is a silhouette of a hen and a chick. Below the sign, the text "BAXTERBARN.ORG" and "PORTAGEBAYGRANGE.COM" is printed. To the right of the sign is a black and white illustration of a young girl with her hair in a bun, wearing a dress with a ruffled collar. She is holding a small chick in her hands. A speech bubble next to her says "The best chicks, feed and supplies are at Baxter Barn!". Below the girl, the text "Also available at Portage Bay Grange" is written.

We offer fertile Eggs from Parents that are Pullorum-Typhoid & Avian Influenza Clean, They have not been on the dirt or exposed to any bird that has been on dirt for limiting exposure or transfer of; parasites, bacteria and disease. The Parent have been vac for meriks.

Name _____

Incubators

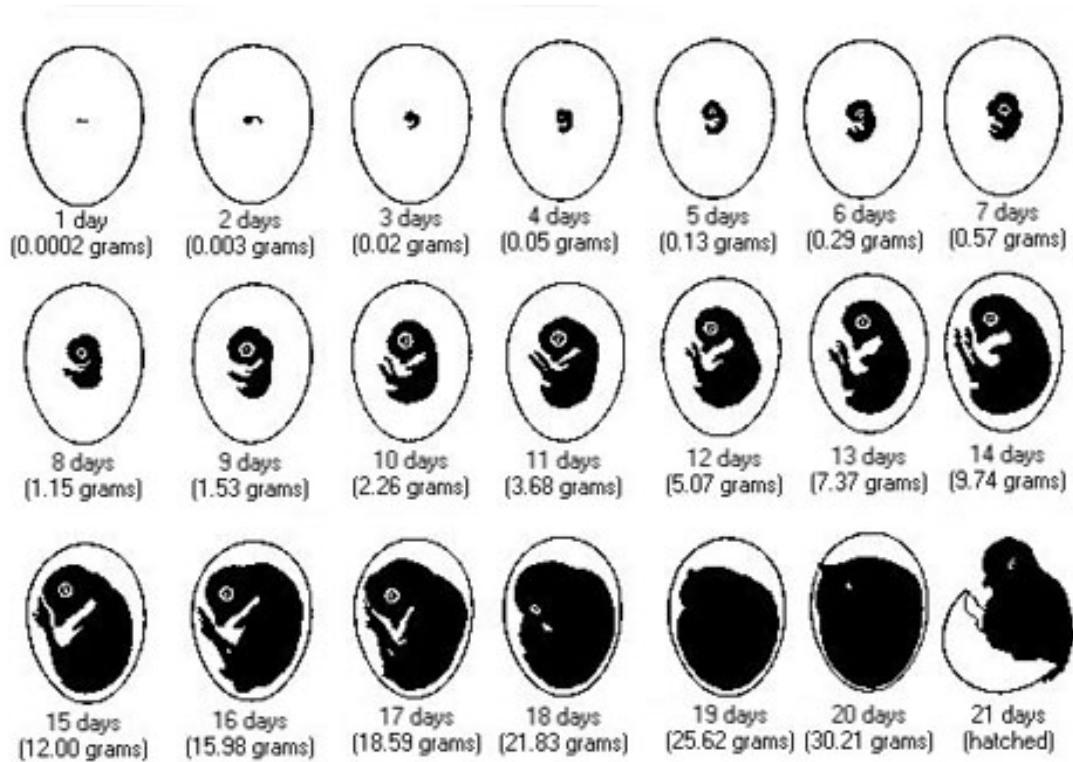
- Fertilized chicken eggs have a 21 day incubation period
- Eggs need to rotate multiple times a day
- Incubators need to be set to 99°F

There are _____ fertilized eggs in my incubator.

Draw a picture of your incubator below.

(When you start with fertile eggs/chicks you are going to end up with a few not hatching and half Roosters. It is best to get at least 6 so you have at least 2-3 females.)

Chick Embryo Development



DAILY CHANGES IN THE WEIGHT AND FORM OF THE DEVELOPING CHICK EMBRYO (WHITE LEGHORN)

Date we put eggs in incubator _____

Date our eggs will hatch _____

Brooders



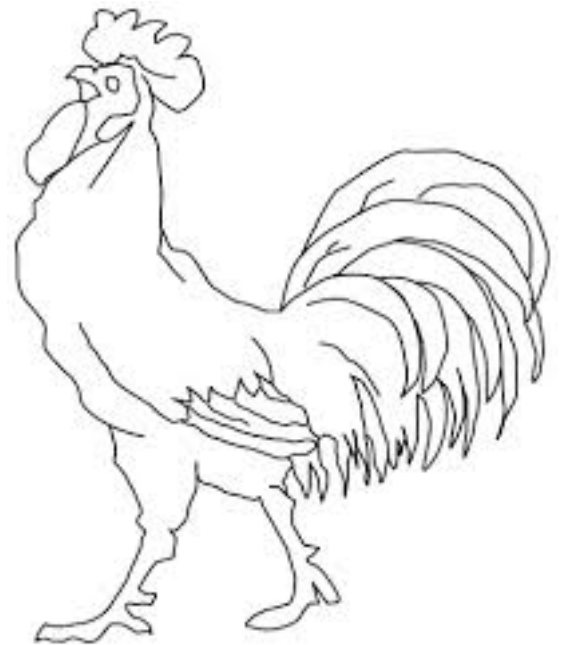
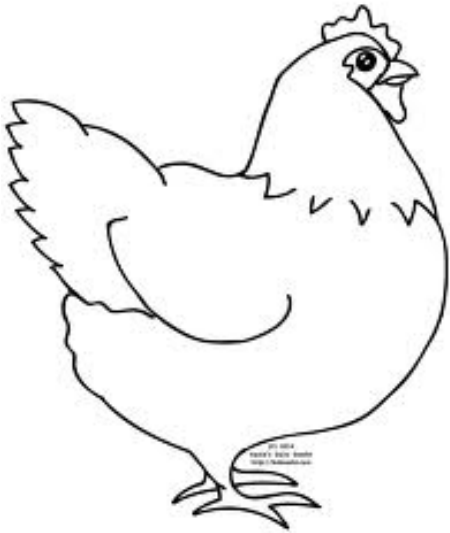
- A brooder is the first home for your newly hatched chicks. They will live there for 4-6 weeks.
- Keep your chicks comfortable with fresh bedding – either white shavings or pine.
- Keep your chicks warm with a red heat lamp made especially for animals.
- Your baby chicks need fresh water and feed made specifically for them.



A Healthy Flock

- When introducing new birds to an existing flock, keep them separate for 4 weeks.
- One rooster for every ten hens.
- Always wash your hands before and after holding your birds.

Draw the baby chicks in their new home.



Keeping Chickens

(the basics for raising a healthy flock)

1. **Do** keep your *newly hatched chicks* under a red, non-ceramic, heat lamp that is **rated for animal use**. Use a heat bulb for only the first 6-8 weeks. **Do not use a white bulb.**
 - Older birds.** If there is light in the coop, keep food and water under it. Adult birds may have a 40w bulb (or less) for 14-16 hrs a day. **Do not use a heated bulb for older birds.**
2. **Do** provide fresh water and feed daily. **Do not give cold water to new chicks.**
3. **Do** use bedding; either white shavings or pine. Keep bedding clean and dry. **Do not use cedar.**
4. **Do** implement the appropriate treatment to guard against coccidiosis. (*Amprolium*)
5. **Do** follow USDA guidelines for introducing new birds to an existing flock by **keeping them separate for 4 weeks (all ages)**. Clean all equipment before using. **Do not mix chicks or mature birds together immediately.** *We do not recommend keeping baby chicks from different sources in the same brooder.*
6. **Do** provide grit daily. **Do not feed your birds grass clippings.**
7. **Do** keep feeding your chicks an appropriate, protein-based, "starter" feed up to 6-8 weeks. Then transition grower/developer feed until your birds start laying eggs. You will then transition to a layer feed. **Do feed your birds a quality poultry feed. (Follow directions on feed tags)** **Do not allow more than 10% of your birds' diet be in the form of treats!**
8. **Do** continue to give your birds an *Acidifier-Probiotic-Vitamin-Electrolyte Supplement* (Acid Pak, Chick Boost) every 7-10 days. During times of stress (ie moving, introducing new birds, extreme weather, illness) **do** give additional treatment per supplement instruction. **Do not let water run out or freeze!**
9. **Do check your birds for worms, mites and other parasites.**
10. **Do** continue to watch your birds for signs of illness ie:
 - Lethargy
 - Loss of color in comb
 - Fluffed feathers
 - Loss of appetite
 - Not drinking
 - Changes in social behavior
 - **Do not let a blocked vent (poopy butt) go unattended.**

Wash hands! Use caution when handling.

Don't Kiss The Chicks!

We know they're cute. We know you love 'em

Practice Poultry Safety!

www.portiguebaygrange.com / www.baxterbarn.org